

Design 1-Prerequisite Senior High Art  
Studio and Art History Survey Course

I) Aesthetics/Criticism

- 1)Prehistoric Life Essay/videos
- 2)Egypt Life Essay/video
- 3)Greek Roman Life Essay/video
- 4)Middle Age Life Essay/video
- 5)Renaissance Life Essay/video
- 6)1600LifeEssay/video
- 7)1800(1900) Life/video
- 8)Prehistoric NOTES
- 9)Egypt Mesopotamian NOTES
- 10)Greek Roman NOTES
- 11)Middle Age NOTES
- 12)Renaissance NOTES
- 13)1600 NOTES
- 14)1800 NOTES

II) History-HOMEWORK

- 15)Degenerate Art/Munch/Duchamp
- 16)Prehistoric Worksheet/Messages FIO
- 17)Egypt/Isamic Worksheet
- 18)Greek Worksheet
- 19)Middle Ages (Medieval) Worksheet
- 20)Renaissance Worksheet
- 21)1600Rembrandt Worksheet
- 22)1800 FIO/1900 Wood Worksheet

III)Work Habits

- 23)Assignment/Grade Sheets

IV)Production-Artwork

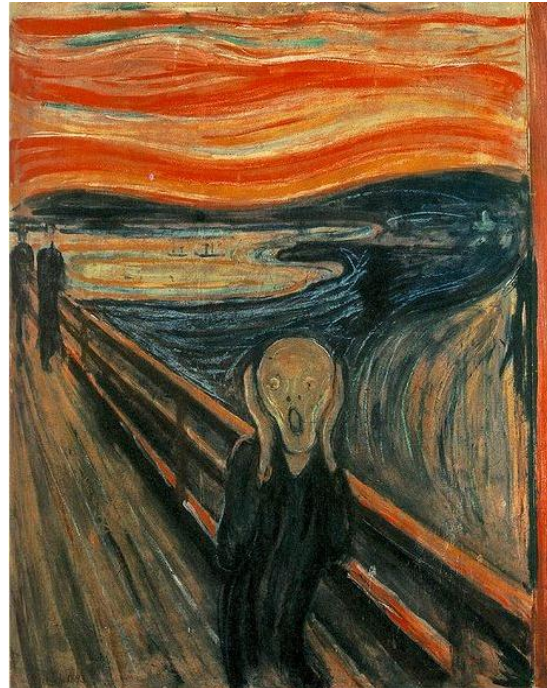
- 24)Social Statement/ Personal State Mask
- 25)Displays/Drawings
- 26)Plaster Cast/ Carve
- 27)Advertise (Prehistoric)
- 28)Mural (Egypt)
- 29)Blding (Greek Roman)/clay
- 30)Mosa/ Stained Glass/Crest (MidAge)
- 31) Mona Lisa (Renaissance)
- 32)Etching (1600Baroque)
- 33)Geo/mobile/WC (1800)
- 34)Pop/Op/Clay Sculpture

V) Tests/Sketches

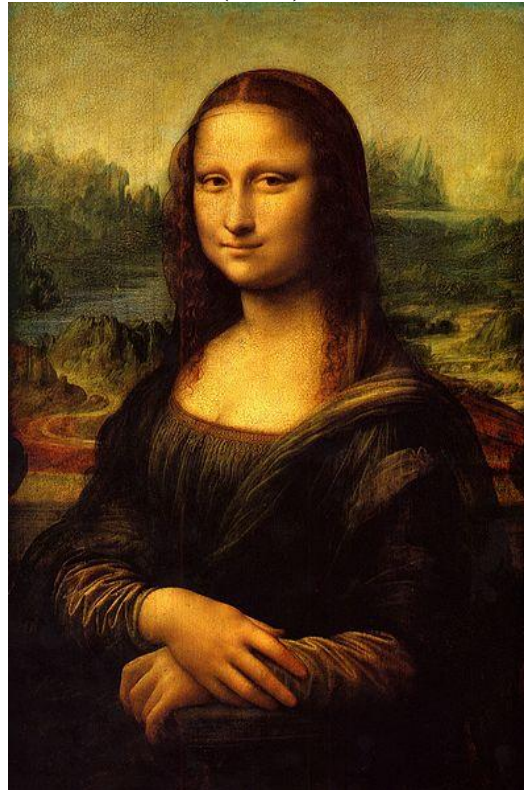
- 35)SLIDES (Prehistoric--Renaissance) /31
- 36)SLIDES (1600-1900)
- 37)TESTS Prehist-Ren/ 1600-1800
- 38)FINALS-ArtInst/Slide
- 39)PORTFOLIO-Art History

VI)Extra Credit

- 40) Extra Credit



**The Scream (1893) ~ Edvard Munch**



**Mona Lisa (1503-1506)  
Leonardo da Vinci**

**Assignment Due Dates:**

**Quarter 1:** Oct 1st, Oct 29<sup>th</sup>

**Quarter 2:** Dec 3rd, Jan 7<sup>th</sup>, Jan 21<sup>st</sup>